



# TOWN OF PARADISE SEWER PROJECT

## PROJECT COMPONENTS



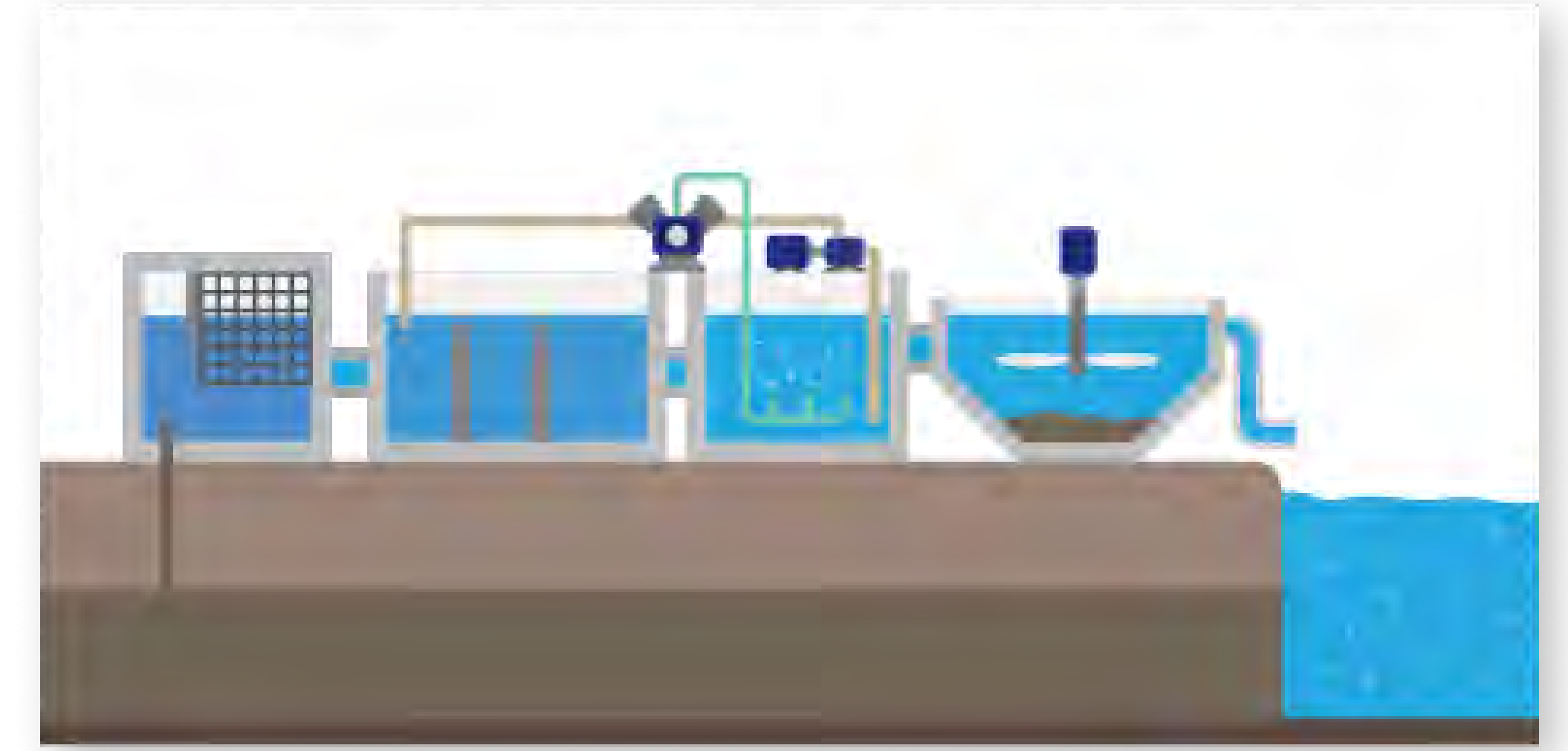
### CORE COLLECTION SYSTEM

A series of gravity sewers, small pump stations, and pressure pipelines will collect wastewater from the sewer service area and convey it to the Export Pipeline System at southwestern edge of Paradise on Skyway.



### EXPORT PIPELINE SYSTEM

An 18-mile pipeline will convey wastewater from the Core Collection System in Paradise down Skyway and across southern Chico to the Chico Water Pollution Control Plant.



### EXTENDED COLLECTION SYSTEM

An extension of the Core Collection System will allow collection of sewage from parcels outside of the Core Collection System but within Paradise town limits up to the allowed capacity.

## STAY UPDATED!



PARADISESEWER.COM



INFO@PARADISESEWER.COM



530-872-6291  
EXT. 112





# TOWN OF PARADISE SEWER PROJECT

## PROJECT OBJECTIVES & GOALS

- 1** Provide long-term, efficient, reliable treatment of wastewater in a cost-effective, environmentally beneficial manner to current and returning Town residents, in a manner acceptable to the RWQCB and other permitting agencies:
  - Accommodate regrowth while reducing further environmental degradation of groundwater and surface water from failing septic systems
  - Reduce the public health risk associated with failing septic systems
- 2** Generate economic recovery by eliminating septic-related capacity limitations, as well as the general burden of on-site wastewater management for businesses:
  - Promote the return or arrival of essential community services and businesses by removing restrictions caused by on-site septic systems
- 3** Provide for the ability to construct and maintain affordable housing, specifically multi-family housing:
  - Support centralizing affordable housing to Paradise's urban core, along major evacuation routes

### STAY UPDATED!



PARADISESEWER.COM



INFO@PARADISESEWER.COM



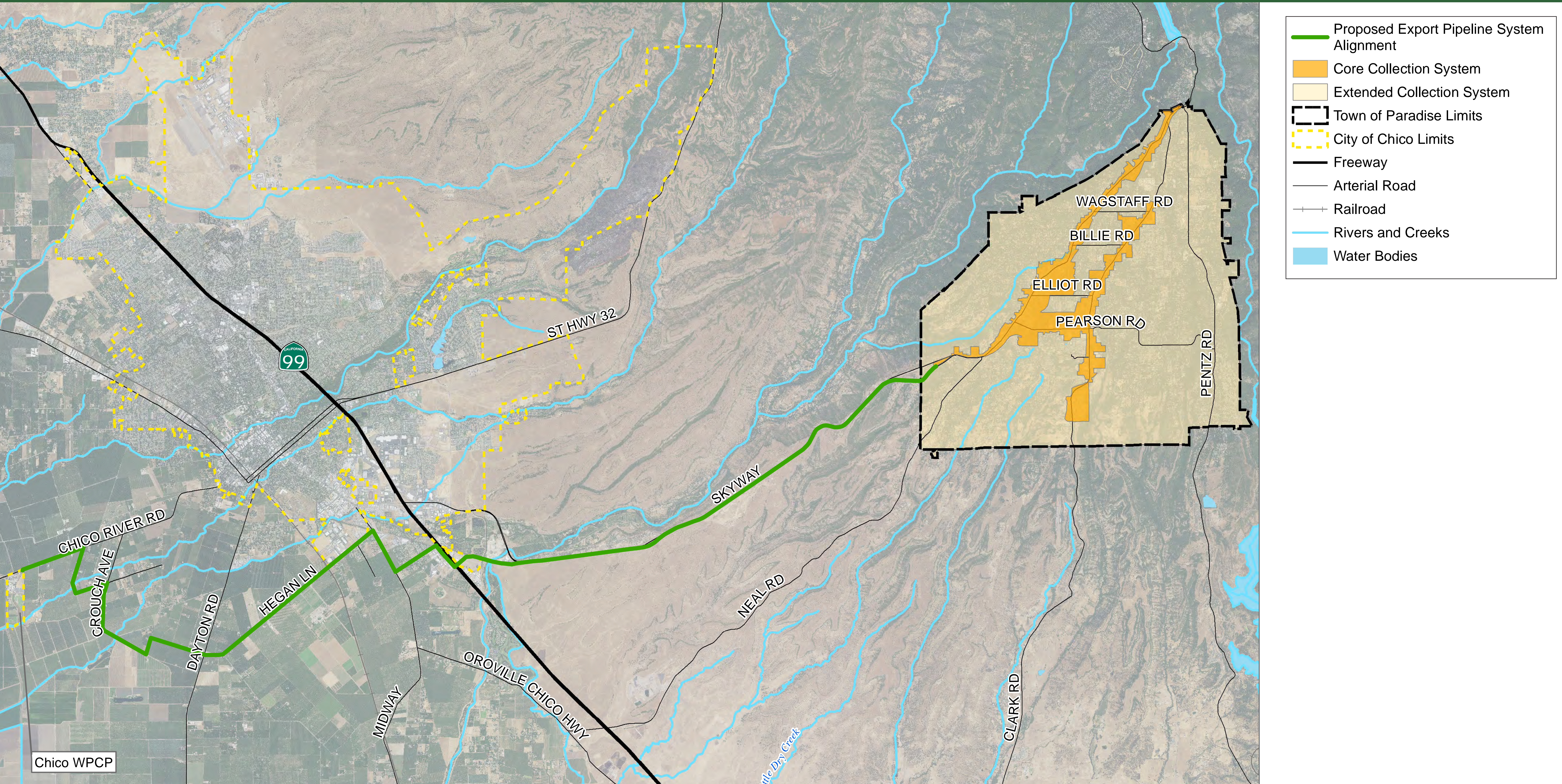
530-872-6291  
EXT. 112





# TOWN OF PARADISE SEWER PROJECT

## PROJECT LOCATION

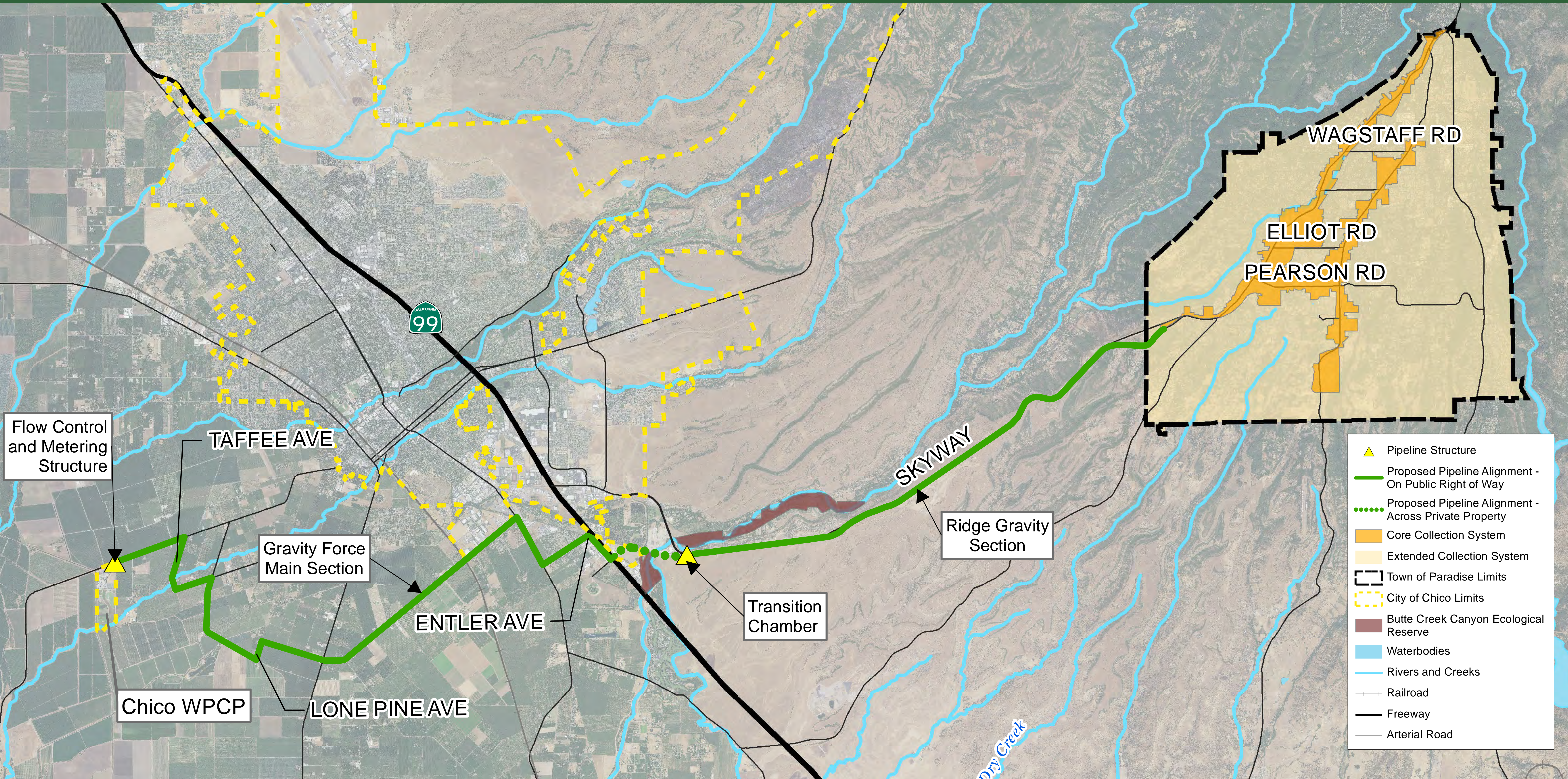






# TOWN OF PARADISE SEWER PROJECT

## EXPORT PIPELINE SYSTEM






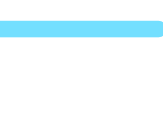


- ▲ Pipeline Structure
- Proposed Pipeline Alignment - On Public Right of Way
- ... Proposed Pipeline Alignment - Across Private Property
- Core Collection System
- Extended Collection System
- Town of Paradise Limits
- City of Chico Limits
- Butte Creek Canyon Ecological Reserve
- Waterbodies
- Rivers and Creeks
- Railroad
- Freeway
- Arterial Road

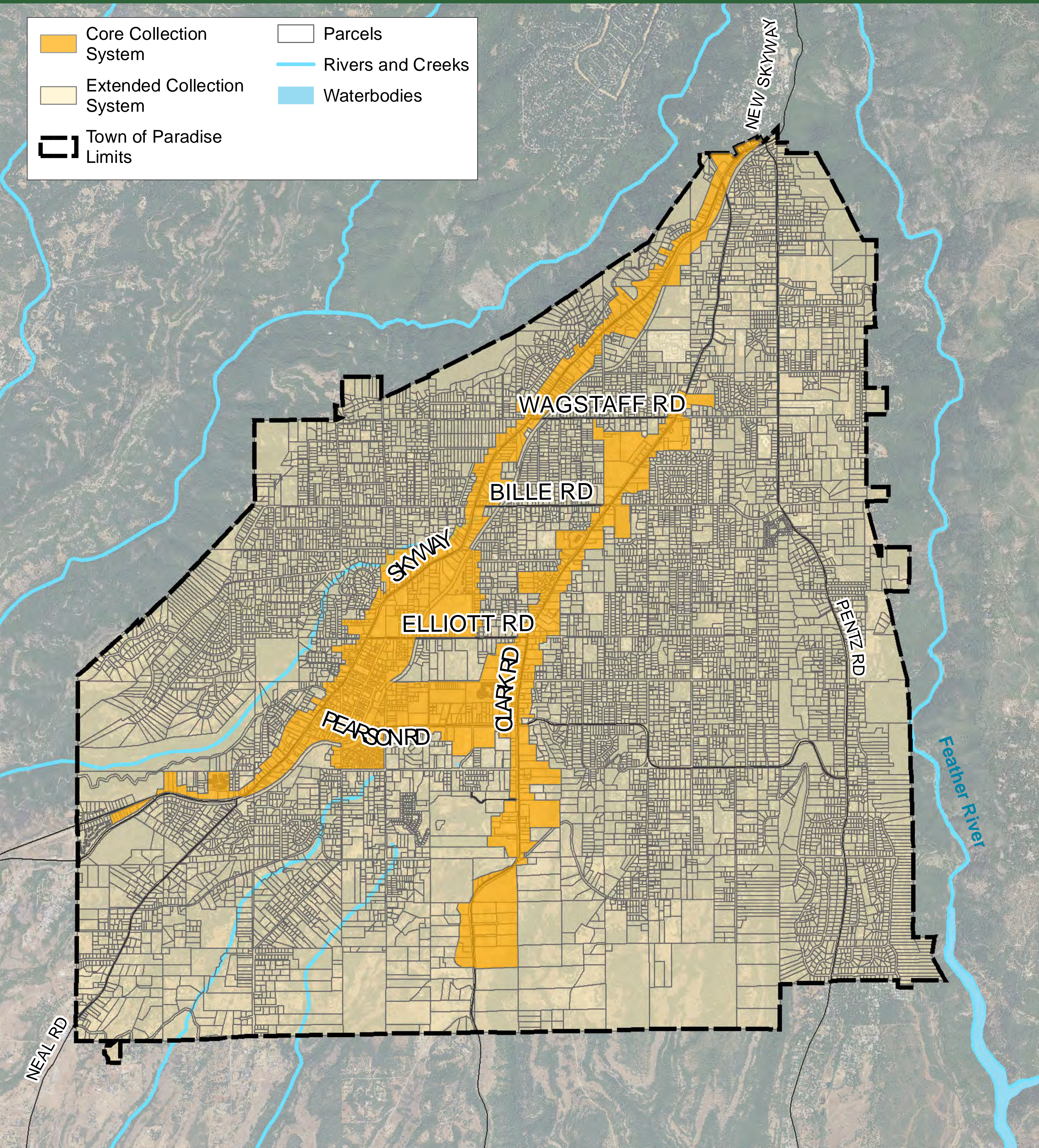




# TOWN OF PARADISE SEWER PROJECT

## CORE & EXTENDED COLLECTION SYSTEMS

 Core Collection System	 Parcels
 Extended Collection System	 Rivers and Creeks
 Town of Paradise Limits	 Waterbodies



**STAY UPDATED!**



[PARADISESEWER.COM](http://PARADISESEWER.COM)



[INFO@PARADISESEWER.COM](mailto:INFO@PARADISESEWER.COM)



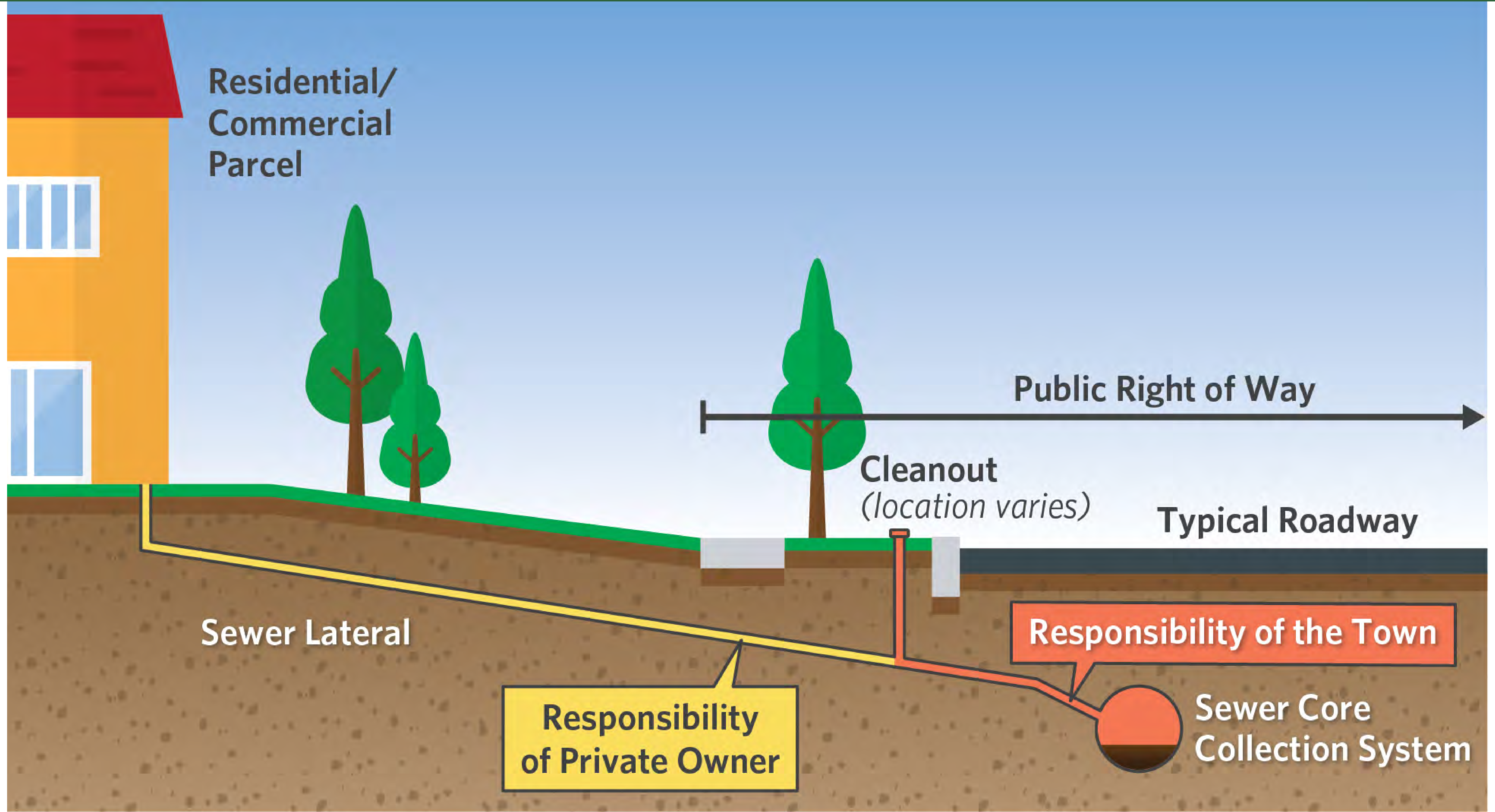
530-872-6291  
EXT. 112





# TOWN OF PARADISE SEWER PROJECT

## CONNECTION TO CORE COLLECTION SYSTEM

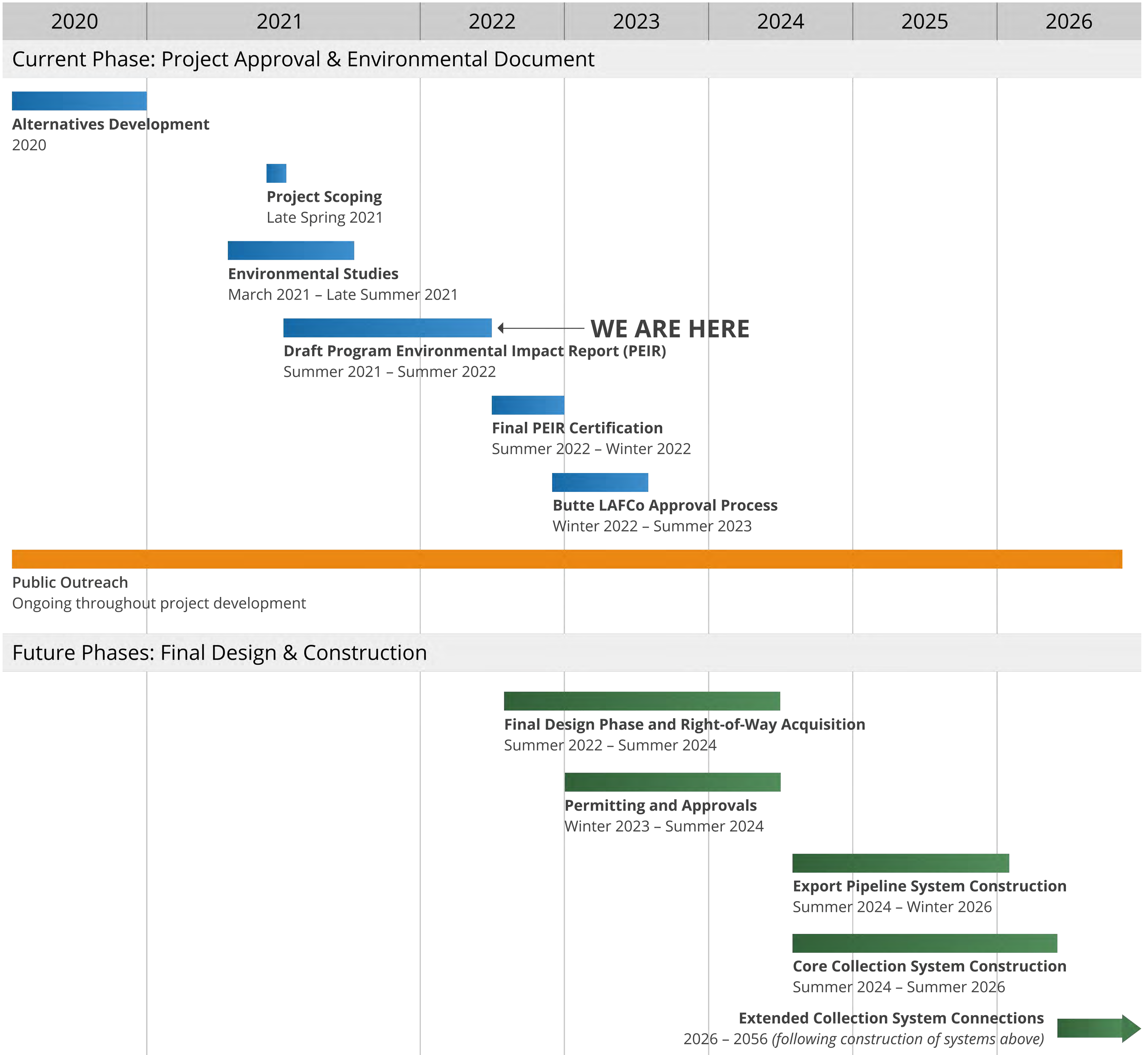






# TOWN OF PARADISE SEWER PROJECT

## SCHEDULE



### STAY UPDATED!



PARADISESEWER.COM



INFO@PARADISESEWER.COM



530-872-6291  
EXT. 112





# TOWN OF PARADISE SEWER PROJECT

## DRAFT PEIR ALTERNATIVES

- 1 No Project Alternative**  
Required by CEQA
- 2 Entler Avenue Hybrid Alternative**  
Alternative pipeline alignment for crossing State Route 99
- 3 Crouch Avenue Alternative**  
Alternative pipeline alignment for crossing Little Chico Creek
- 4 Entler Avenue Hybrid & Crouch Avenue Alternative**  
Alternative pipeline alignment for crossing State Route 99 and Little Chico Creek

**The Proposed Project with mitigation incorporated would not result in significant & unavoidable impacts, or cumulatively considerable & unavoidable impacts, to any resource evaluated in Draft PEIR.**

**STAY UPDATED!**



[PARADISESEWER.COM](http://PARADISESEWER.COM)



[INFO@PARADISESEWER.COM](mailto:INFO@PARADISESEWER.COM)



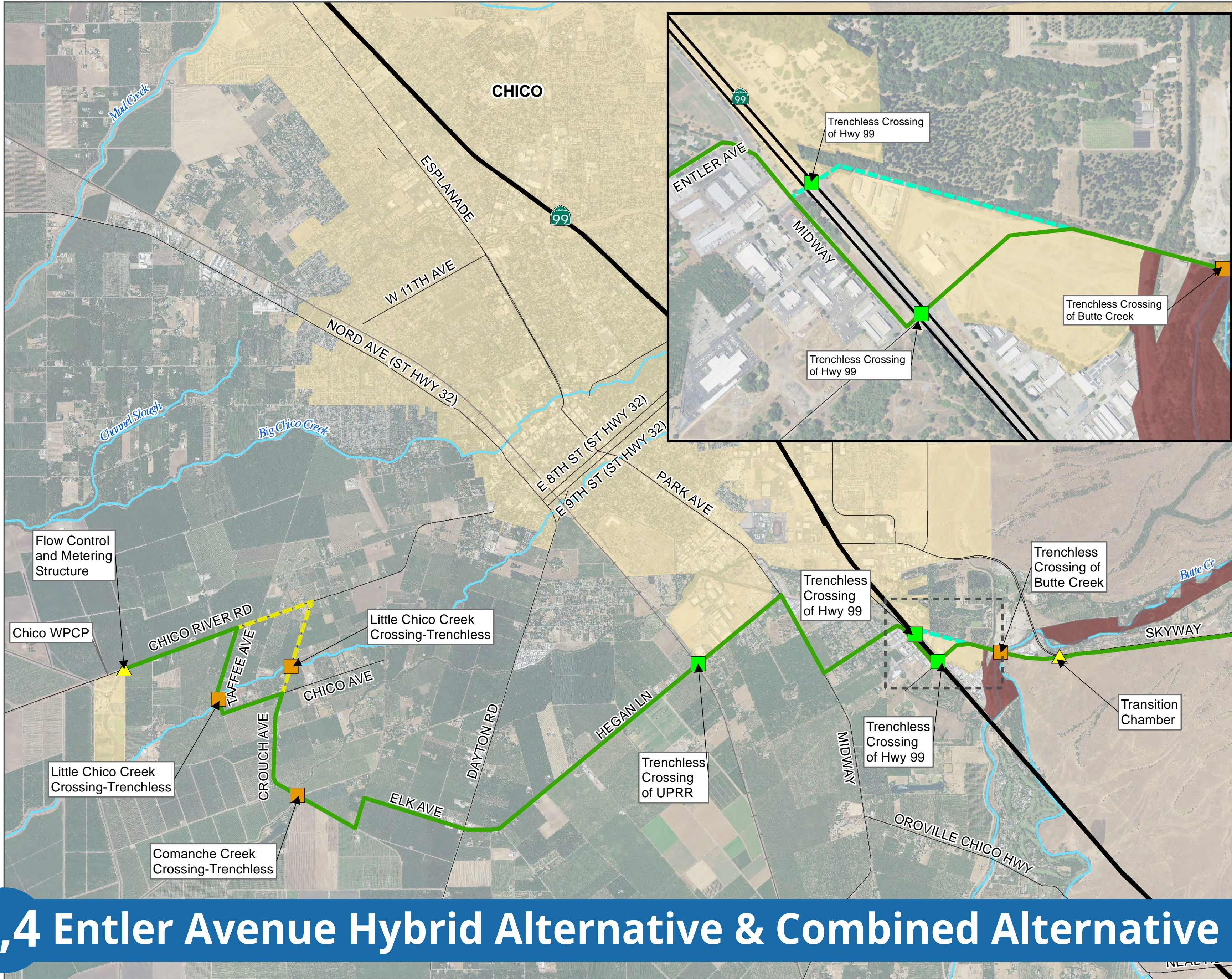
530-872-6291  
EXT. 112



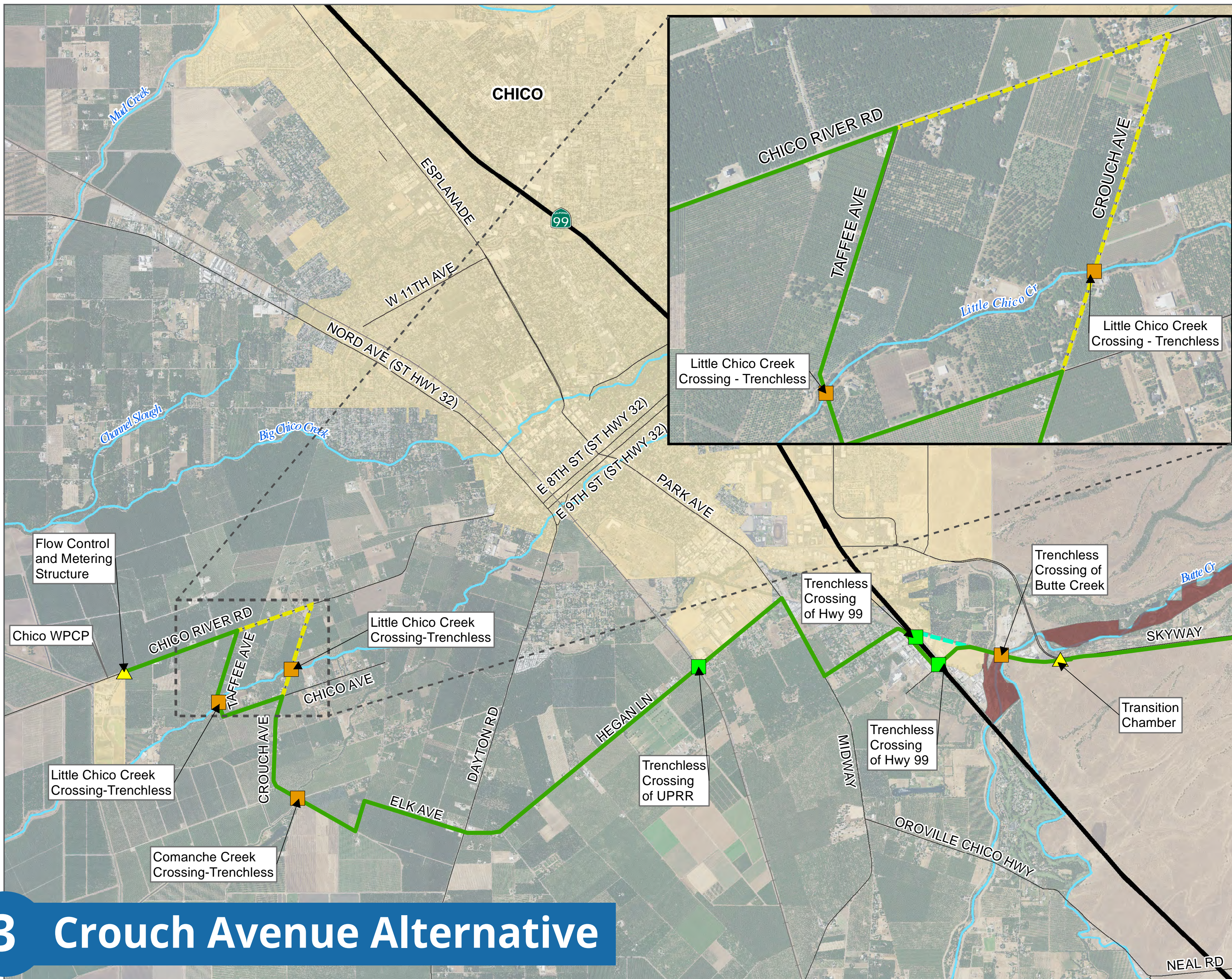


# TOWN OF PARADISE SEWER PROJECT

## PROJECT ALTERNATIVES



**2,4 Entler Avenue Hybrid Alternative & Combined Alternative**



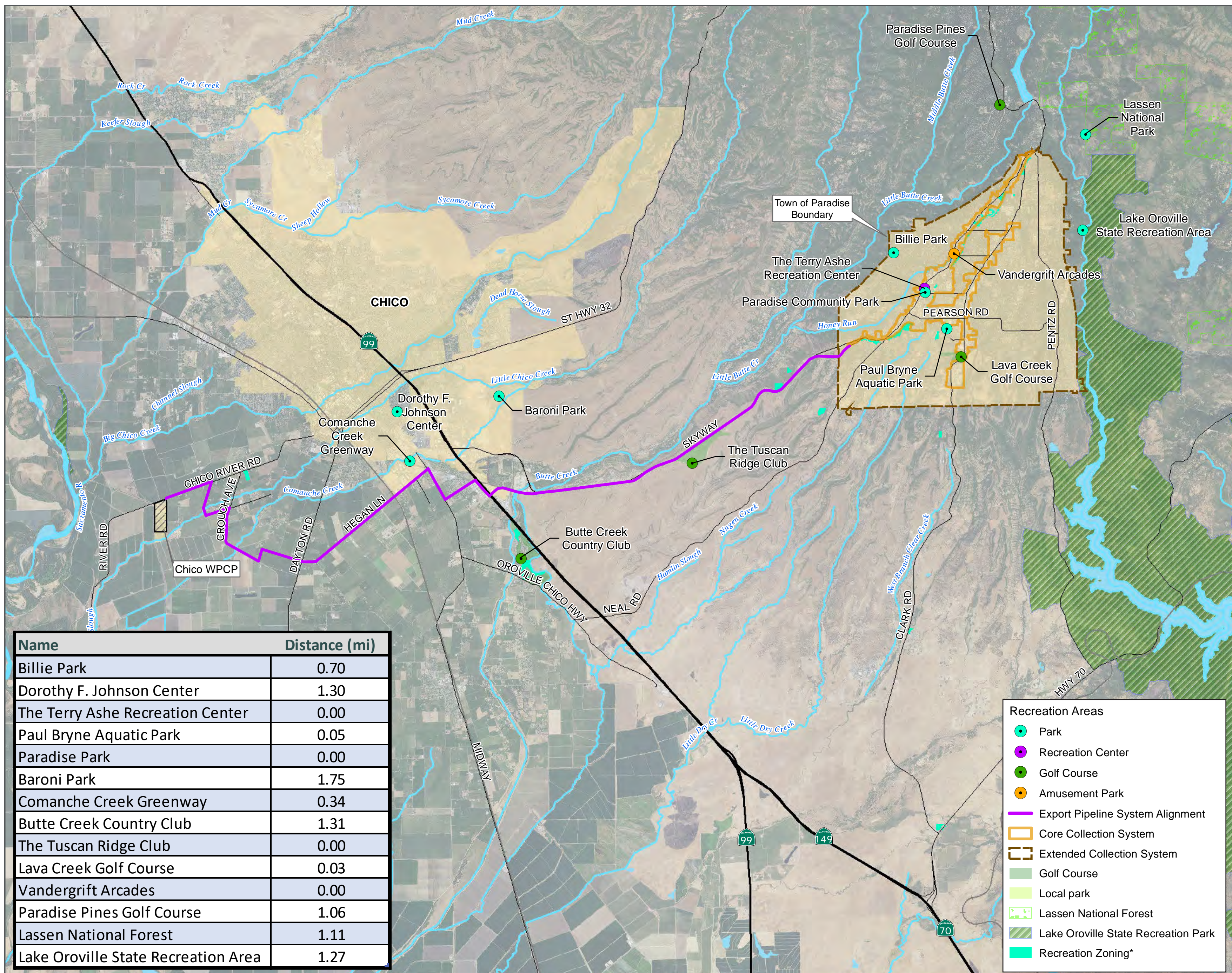
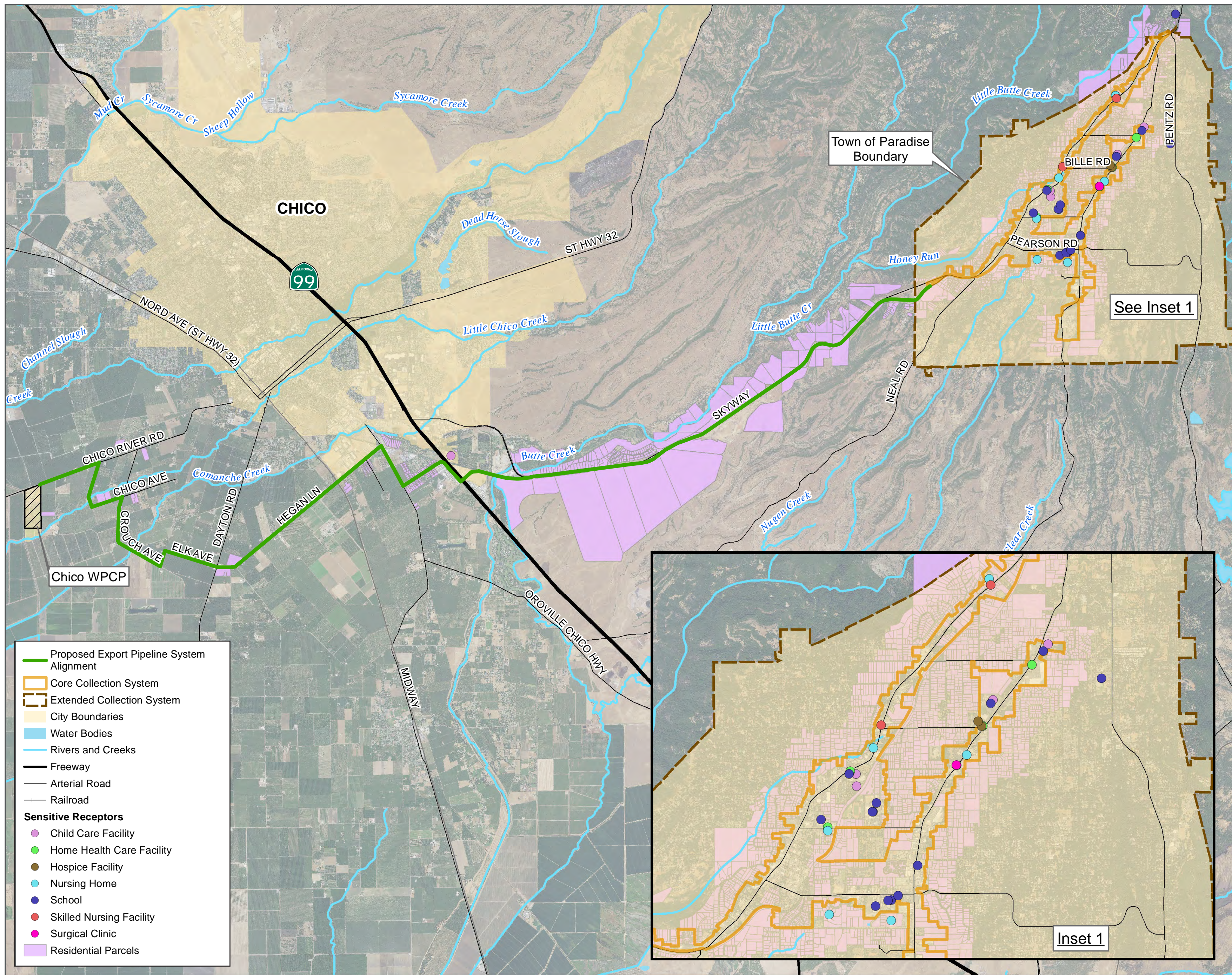
**3 Crouch Avenue Alternative**





# TOWN OF PARADISE SEWER PROJECT

## SENSITIVE RECEPTORS & RECREATIONAL AREAS

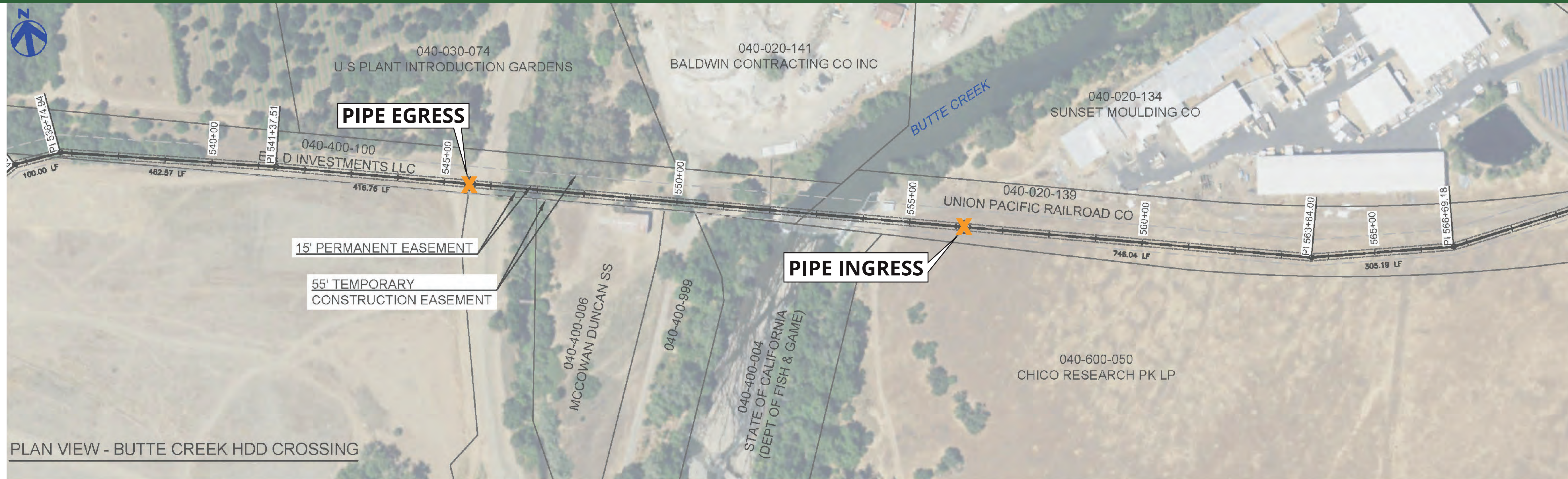




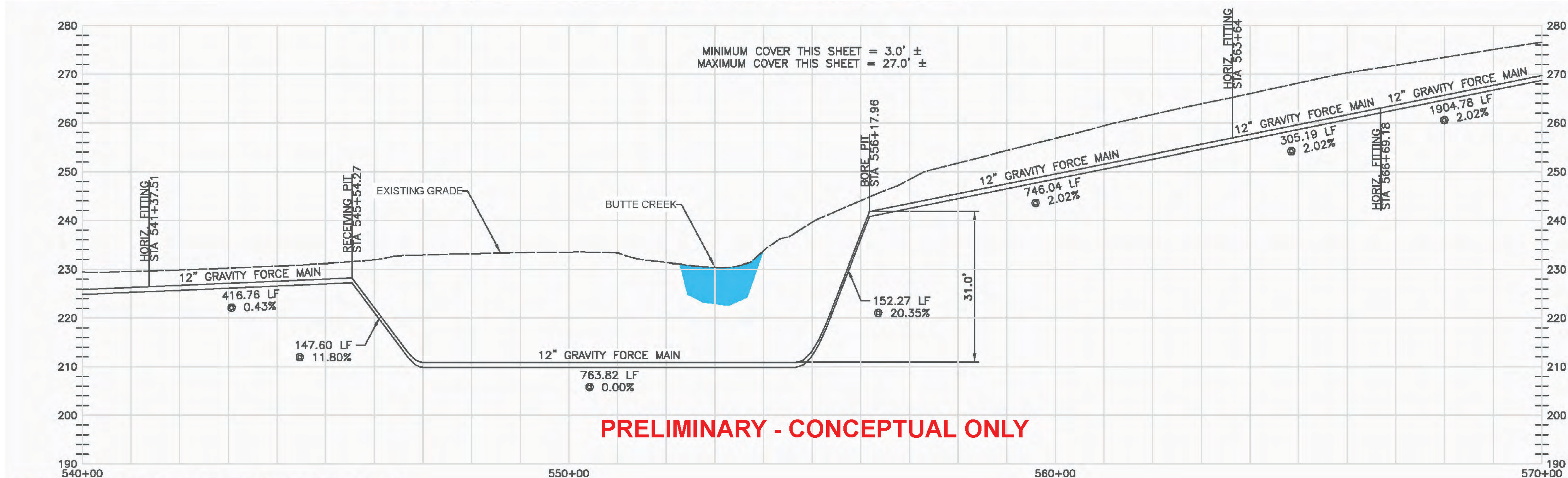


# TOWN OF PARADISE SEWER PROJECT

## BUTTE CREEK & BUTTE CREEK CANYON ECOLOGICAL RESERVE CROSSING



PLAN VIEW - BUTTE CREEK HDD CROSSING



**PRELIMINARY - CONCEPTUAL ONLY**

PROFILE VIEW - BUTTE CREEK HDD CROSSING





# TOWN OF PARADISE SEWER PROJECT

## HOW TO PROVIDE COMMENTS

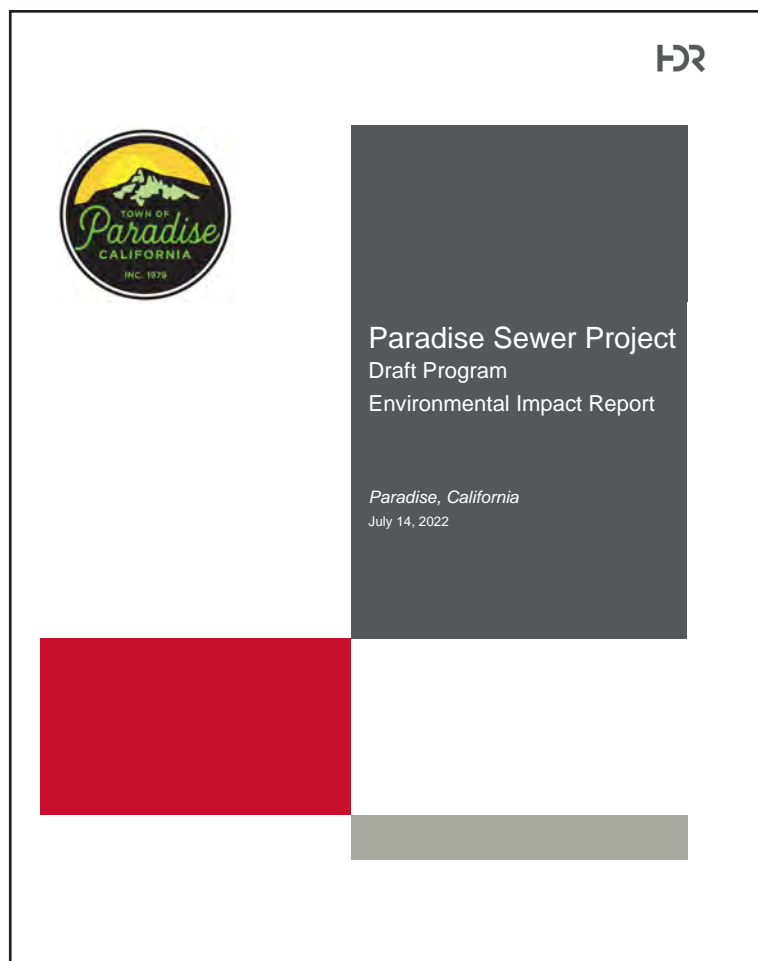


### [paradisesewer.com](https://paradisesewer.com)

(from subject dropdown menu, select "Submit a comment on the Draft PEIR")



Colette Curtis, Public Information Officer  
Town of Paradise  
5555 Skyway | Paradise, CA 95969



Hardcopy available during normal working hours until **August 29, 2022**:

### PARADISE

- Town Clerk at Paradise Town Hall (5555 Skyway)
- Butte County Library, Paradise Branch (5922 Clark Rd)
- Terry Ashe Recreation Center (6626 Skyway)

### CHICO

- City Clerk at Chico City Hall (411 Main St)
- Butte County Library, Chico Branch (1108 Sherman Ave)
- CARD Community Center (545 Vallombrosa Ave)

### OROVILLE

- Butte County Clerk (155 Nelson Ave)

**Comments accepted through  
August 29, 2022 @ 5:00 p.m.**

## STAY UPDATED!



PARADISESEWER.COM



INFO@PARADISESEWER.COM



530-872-6291  
EXT. 112





# TOWN OF PARADISE SEWER PROJECT

## PARTICIPATING AGENCIES

### CEQA Lead Agency



### Responsible Agencies



### STAY UPDATED!



[PARADISESEWER.COM](http://PARADISESEWER.COM)



[INFO@PARADISESEWER.COM](mailto:INFO@PARADISESEWER.COM)



530-872-6291  
EXT. 112